

Built-in Burner 800mm with safety chamber and lip

Brushed stainless steel

Technical Data

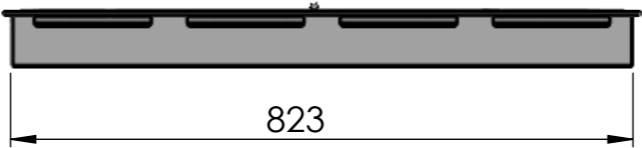
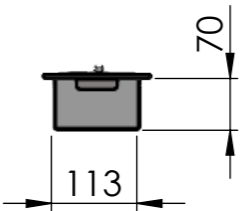
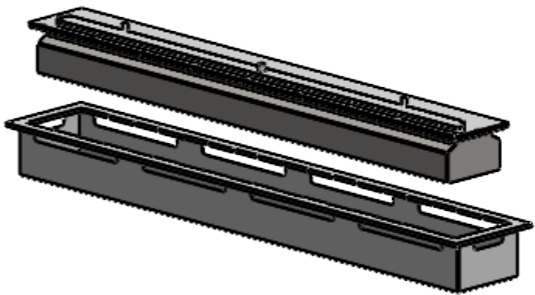
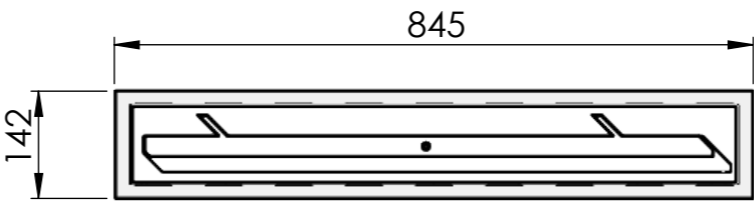
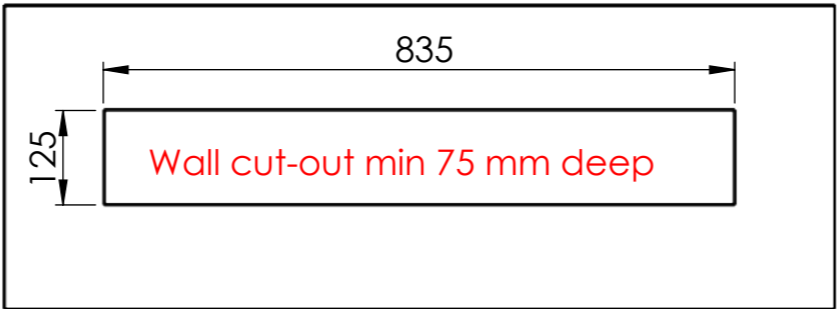
Capacity 4,1 L
Burning time 5 -10 h
Heat Outout 4,8 - 2,4 kw
Net weight 10,9 kg.


Features:

Decofame® brushed stainless steel manual burner
Adjustable flame height
No chimney required
No ash, smoke or soot
Outdoor use
Safety chamber with lip
Shutter tool
3M Sponge

Optional

Glass screen



Dimensions are in millimeters		 <div>DecoFlame ApS Vang Mark 2 9380 Vestbjerg TLF: +45 96 30 48 00 www.decoflame.com</div>	SCALE: 1:10
REVISION:	Date		FORMAT: A3
-	12-05-2021		Page 1 OF 1
Author: TTK		Order Number - Customer - Reference: PRINCIPLE Built-in burner 800mm with lip	
Copyright of DecoFlame ApS Denmark, whose property this document remains. No part thereof may be disclosed, copied, duplicated or in any other way made use of, except with the approval of DecoFlame ApS.		Customer Approval Signature - Date	