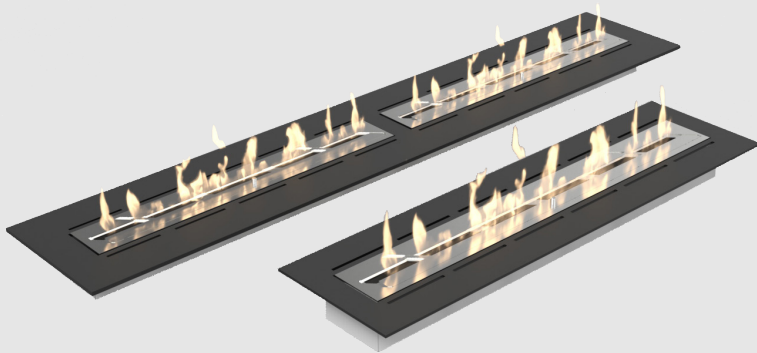


MONTREAL BASEPLATE™ MANUAL BURNER

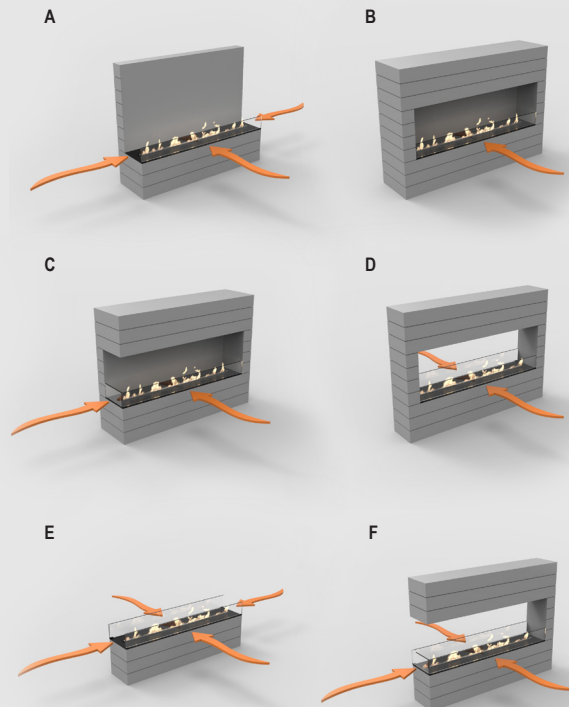


Montreal Baseplate is a manual bioethanol built-in burner. It comes in 3 standard sizes but can be manufactured in customized dimensions and can integrate one or several manual burners of dimensions from 500mm to 900mm.

The flame height can be manually adjusted in order to regulate the fuel consumption.

FEATURES

- Decoflame® brushed stainless steel manual burner
- Safety chamber
- Manually adjustable flame height
- No chimney required
- Shutter tool
- 3M Sponge
- Optional hardened, diamond clear glass



Decoflame highly recommends ordering and installing one or several glass screens in order to protect the flame from draught, while keeping it vivid.

The glass screen is available on request.

1. The glass can be mounted onto the surface, in which the bio fireplace is installed.
2. The glass can be placed on the baseplate.
Contact Decoflame for the different options.

Model A-B One low glass.

Model C, E, F Low glass. We recommend it as illustrated for the best result regarding design and operation.

Model D Two low glass or one full glass and one low glass.

TECHNICAL INFORMATION

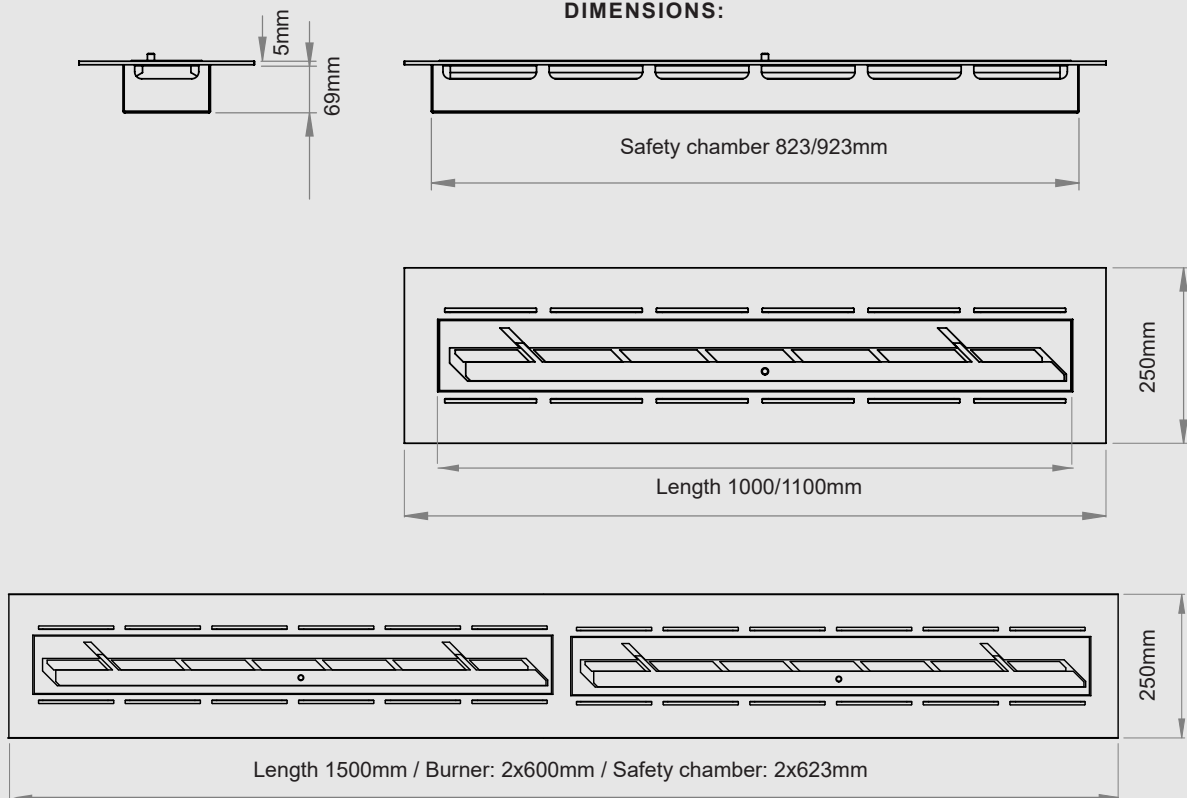
	1000x69x250	1100x69x250	1500x69x250
Top plate height (Not included in the 69mm)	5mm	5mm	5mm
Manual burner size	800mm	900mm	2 x 600mm
Capacity L	3.9	4.4	2 x 2.9
Fuel consumption	0.98 - 0.56 l/h	1.1 - 0.63 l/h	2 x 0.73 - 0.41 l/h
Burning time	4-7 hours	4-7 hours	4-7 hours
Heat efficiency	5.4 - 3.2	6.1 - 3.6	2 x 4.0 - 2.4
Minimum room size: m³	64	72	96

BIOETHANOL

For use and information about bioethanol, please visit our website decoflame.com.

(Please be aware that bioethanol is essential to a proper use and guarantee of your product).

DIMENSIONS:



It is imperative to follow the indications in the User manual, concerning the installation of decorative or electronic items above the fireplace.

