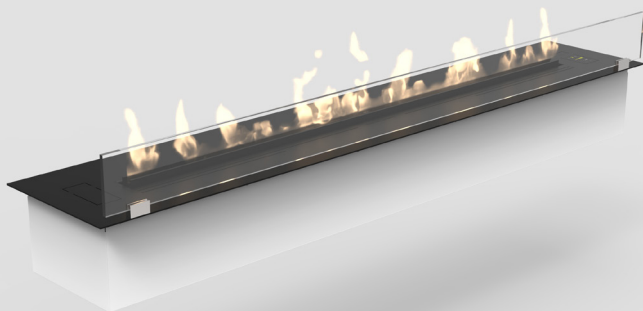


# DENVER E-RIBBON BASIC™

## 720mm - 920mm - 1120mm



3 sizes

Denver e-Ribbon Basic, is an automatic burner available in three standard dimensions.

Featuring the e-Ribbon Fire™ burning system, Denver e-Ribbon Basic is suitable for various fireplace applications, either as a drop-down burner in various nonflammable materials or integrated in built-in models such as the Montreal and Orlando.

It is easy to operate with either remotecontrol or on the controlpanel and via the Decoflame App, as well.

### FEATURES

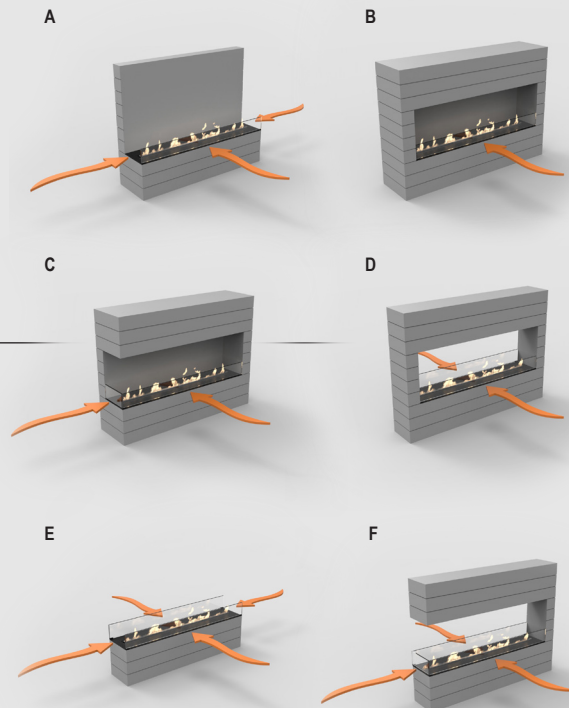
- e-Ribbon™ technology
- Safety sensors / Safety chamber
- Fuel Level Indicator / Flame Level Indicator
- Remote control
- Bluetooth / App
- 6 flame levels (1-5 + ECO-Wave)
- No chimney required - no smoke, ash or soot

### TOP FINISH

- Standard: Black powder coated top-plate
- Optional: Stainless steel and any RAL colour
- Request: Other finishes/materials

### GLASS

- Standard: One 80mm high diamond clear glass screen.
- Optional: Additional glass screen.



Decoflame strongly recommends installing one or more glass shields in order to protect the flame from draught, while keeping it vivid.

The model comes standard with glass as in version A.

It is possible to order more glasses for version B-F.

In version C and F, it is only possible to order the small end glass - if the topplate is minimum 300mm in depth.

### TECHNICAL INFORMATION

	720mm	920mm	1120mm
Flametray size	500mm	700mm	900mm
Capacity	4L	5,8L	7,2L
Fuel consumption	0,3 - 0,6 l/h	0,4 - 0,8 l/h	0,6 - 1 l/h
Burning time	7 - 20h	7,5 - 20,8h	7,3 - 20h
Heat output	1,2 - 3,2 kWh	1,6 - 4,3 kWh	2,1 - 5,7 kWh
Net weight	19,5kg	22kg	26kg
Minimum room size	64m³	89m³	115m³

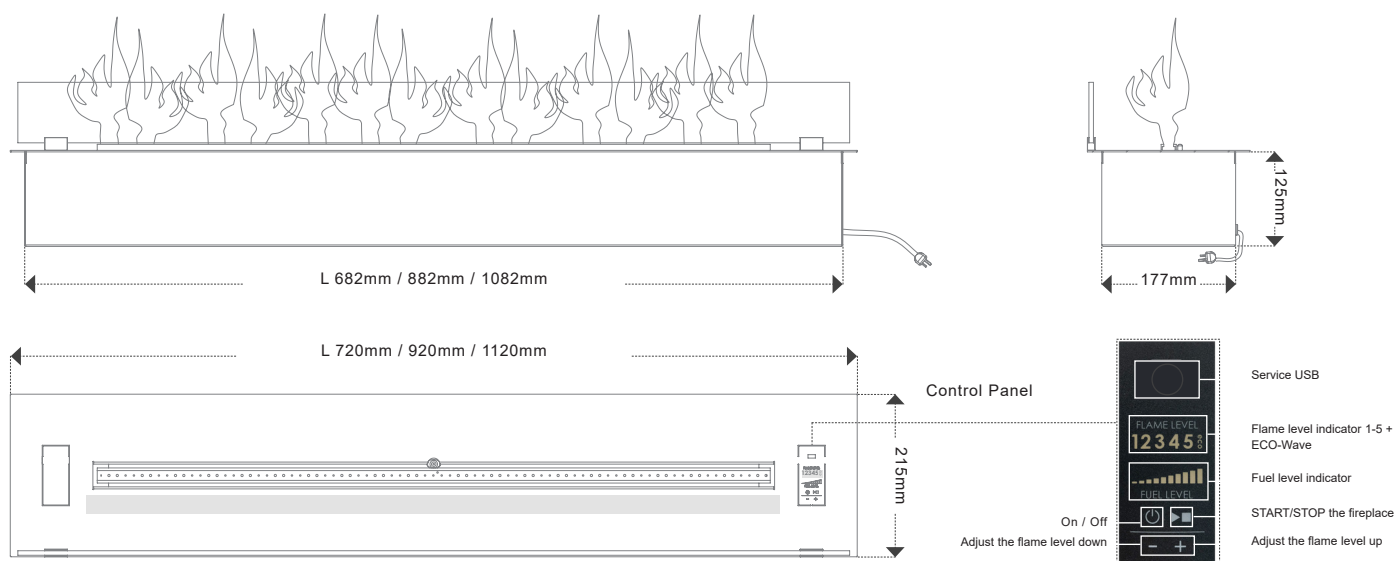
Power supply: 220V - 240V, 50 Hz

### BIOETHANOL

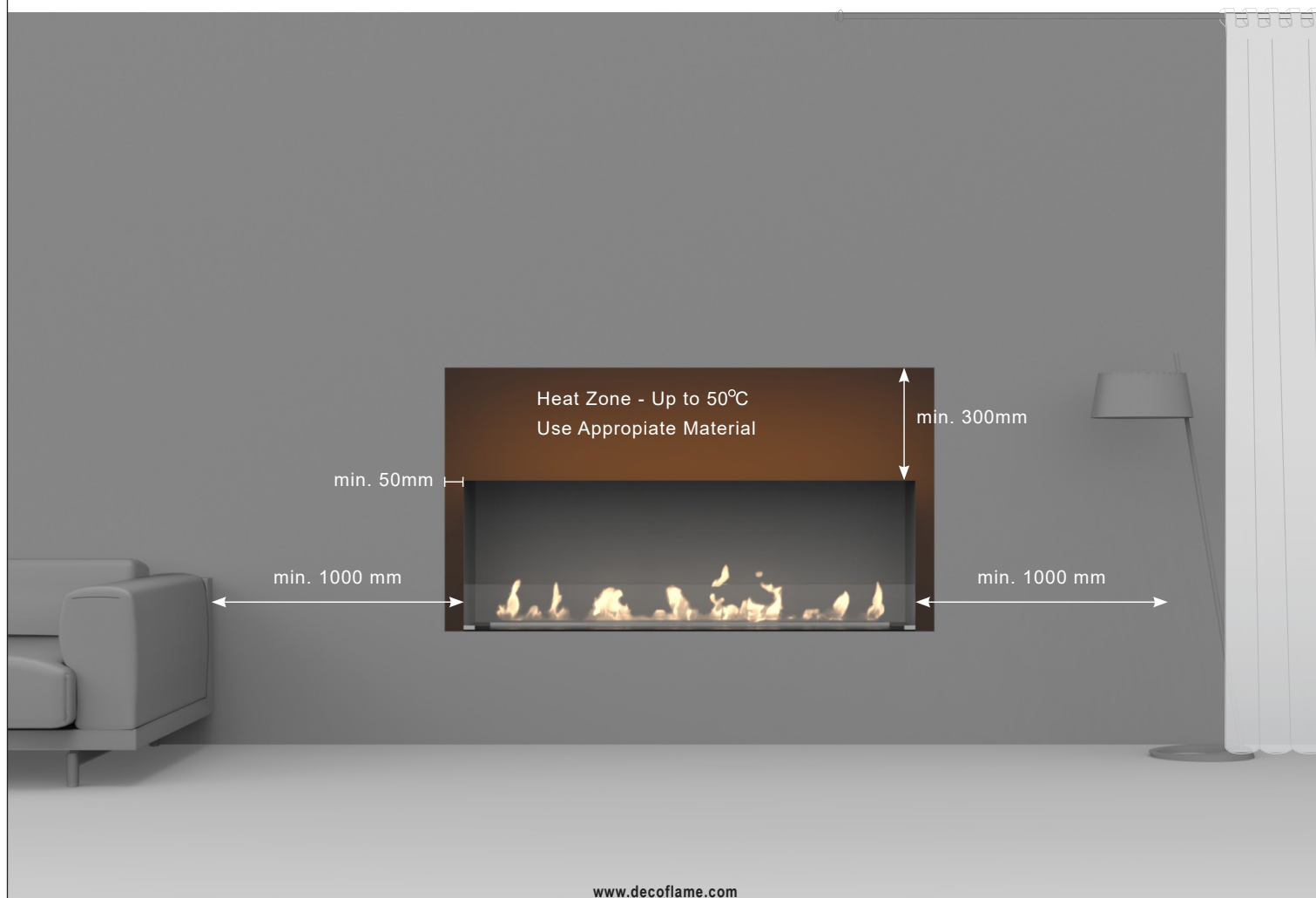
For use and information about bioethanol, please visit our website [decoflame.com](http://decoflame.com).

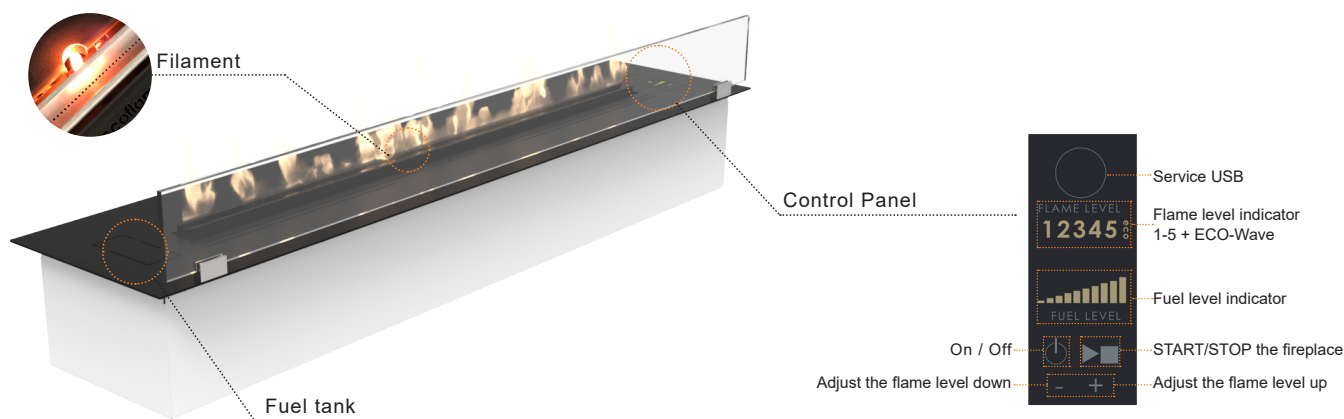
(Please be aware that bioethanol is essential to a proper use and guarantee of your product).

## DIMENSIONS:



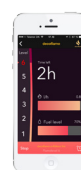
## ATTENTION:





### Operating:

Step 1	Turn on the electronics of your Denver e-Ribbon Basic™ by pressing the  button.
Step 2	Fill in the right amount of bioethanol in the fuel tank by verifying the level on the fuel level indicator.
Step 3	To ignition the fireplace. Press the  button on the control panel. After about 3 minutes, the first flames will appear around the centre of the flame tray.
Step 4	When the filament is no longer red (approx. 10 min) it is possible to adjust the flames.
Step 5	To switch off the fire at any time – also during the warming-up phase – press the  button on the control panel. The flames will disappear within a few minutes.



Use the supplied remote control or download the Decoflame App to your mobile device for controlling the biofireplace.

### Installation of Decoflame App to the Denver e-Ribbon Basic burner

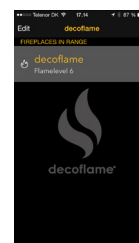


App Store



Google play

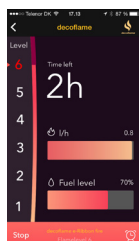
<b>Model:</b>	Denver Basic 720 - black	CE
<b>Dimensions:</b>	720x215x125mm - Flame Tray 500	
<b>Power Supply:</b>	220/240V - 50Hz must be earthed	
<b>Serial Number:</b>	72000.05.16.V1.001	
<b>Thermal Output:</b>	max 2.9 kW	
<b>Fuel Type:</b>	bioethanol 96%	
<b>Room Volume:</b>	min. 58 m³	
<b>Radio Frequency:</b>	433.92 MHz	
<b>Bluetooth Code:</b>	0001	
<b>Manufacturer:</b>	Decoflame ApS - Made in Denmark	



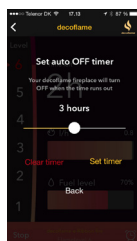
1. Download and install the Decoflame App corresponding to your smart device's operating system. For more information go to: [decoflame.com](http://decoflame.com).

2. In order to pair your fireplace with your smart device, start the fireplace by pressing the 'ON' button.  
Start the App and choose your fireplace. Insert the code from YOUR rating plate, like the one highlighted above.

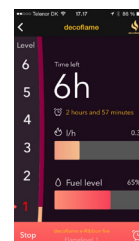
3. Once your device is paired, the fireplace should be visible on the app. You are now able to change the name of the fireplace.  
**Note:** You are able to pair more than one fireplace like described in the step nr. 2 and give them different names.



4. Once you have selected your fireplace, you can turn it on by pressing 'START'. If the fireplace has already been turned on using the control panel, you can now monitor the fuel level and the consumption.



5. For the 'Turn Off Timer' press the clock icon in the lower right corner. To adjust the remaining time, slide the dot to the left and right and select 'SET TIMER'. The remaining burning time can be changed by repeating the above mentioned steps. To cancel the timer select 'CLEAR TIMER'.



6. For adjusting the flame intensity, select the desired level on the left side of the screen. (1-lowest, 6-highest)  
Should there not be enough fuel for the selected burning time - the fireplace will shut down automatically.  
Select 'STOP' to turn off the fireplace.